

You are here: [Home](#) \ THE NEW BRICKLAYERS ARMS?

[Print friendly version](#) [Send to a friend](#)

## THE NEW BRICKLAYERS ARMS?

[Discussions \(0\)](#)

2 January 2009

By John Prendergast  
[johnp@southwarknews.org](mailto:johnp@southwarknews.org)

### **RADICAL NEW plans for the Bricklayers Arms Flyover have been revealed.**

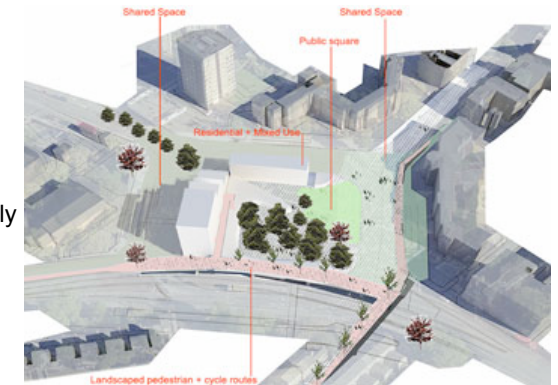
The idea proposes a raised platform, incorporating part of the existing flyover, on which a green space and market area could be developed and would also link existing cycle routes both north and south of the current structure.

Meanwhile traffic that needs to flow through the area can move below and around the structure, resulting in the area, which is currently dominated by vehicles, being used by a mixture of people, cars and bicycles.

The drawings have been released by David Nossiter Architects, who have worked on the idea with Michele Ragozzino Architecture & Design and Southwark Cyclists. They will be used as the basis of plans to be put to Transport for London (TfL).

David Nossiter said: "The existing flyover is part of the Inner London Hub motorway from the '60s that was never completed. The traffic that passes through there does not justify a huge interchange. The idea is to try to reduce the impact of traffic at the Bricklayers Arms, and to try to attract people to the area by using the park and making it a shared area at the lower end of Tower Bridge Road."

Council leader Cllr Nick Stanton said: "The Bricklayers Arms flyover is a hangover from a never-completed 1960s scheme. It is not only redundant, but it separates Bermondsey from Walworth. It is to be frank a concrete monstrosity and I would love to get rid of it. However, TfL manages the road, and that means that TfL has the final say as to what happens to it. And at the moment, as far as I know, there are no plans on the table."



---

[Got something to say about this? Start a discussion](#) (You are not logged in)

---

Social Bookmarks:

[del.icio.us](#) [Digg](#) [Newsvine](#) [Reddit](#) [Facebook](#) [StumbleUpon](#)  
[Wikipedia: social bookmarking](#)

---

## In your area

Jump to news in your area

## Latest from the forums

Go to a forum in your area



Postcode

e.g. SE1

Min. Price

Any

Max. Price

Any

Bedrooms

Any

To Let  For Sale

Search

## Latest Properties

[Blakes Apartments SE15, &pound66,600 , For Sale](#)

[Deepdane Road SE5, &pound2,500 , PCM, To Let](#)

[Denmark Road SE5, &pound1,149 , pcm, To Let](#)

[Jamaica Road - Riverside SE16, &pound239,950 , For Sale](#)

- [Jobs](#)
- [Motors](#)
- [Classifieds](#)

[Place a Recruitment Advert](#)

[Maths Teacher + Administrative Assistant](#)

[Data Clerks](#)

[Supply teachers urgently wanted](#)

[Telemarketing person required](#)

[Bus Drivers](#)

[Sales Representative](#)

[Place a Motor Advert](#)

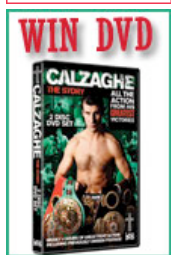
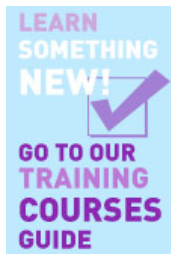
[Cars R Us](#)

[Chauffeur Time London](#)

[Thompson's School of Motoring](#)  
[Roberts Driving School](#)  
[MOT at Plough Way](#)  
[W B Cars](#)  
[Place a Classified Advert](#)

## Subscriptions


Sign-up to our newsletter today!

**SUPPORT  
OUR  
PARKS!**  
Vote for  
your park's  
chance of a  
makeover >>


**Southwark  
News**  
The Essential Guide  
to Education  
2008 - 2009

- Parents
- Employers
- Students
- Teachers



Londonice

**taste** SPRING



WEDNESDAY



**NO MORE REMINDERS**

*Southwark*  
Council

**PAY YOUR COUNCIL TAX OR FACE PRISON.**

**CONTACT US TO MAKE PAYMENT ON 020 7525 1850.**

[CLICK HERE](#)  
for more information

[Advertising Policy](#)

[Close Print Friendly Version](#)

[Accessibility](#) | [Site Map](#) | [Home](#) | [News](#) | [Sport](#) | [Food & Drink](#) | [Arts & Listings](#) | [Shopping](#) | [Health & Fitness](#) | [Kids](#) | [Property](#) | [Jobs](#) | [Classified](#) | [Motors](#) | [Family Announcements](#)

© Copyright 2009 Southwark News. All Rights Reserved. Powered by Atia. Developed by [Regenesys](#) | [Top](#)